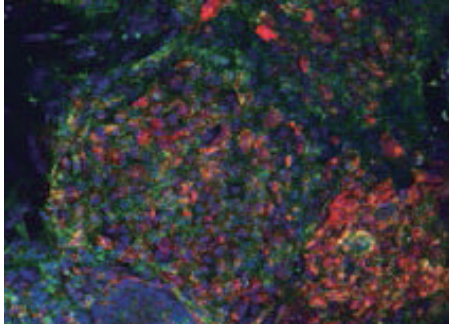


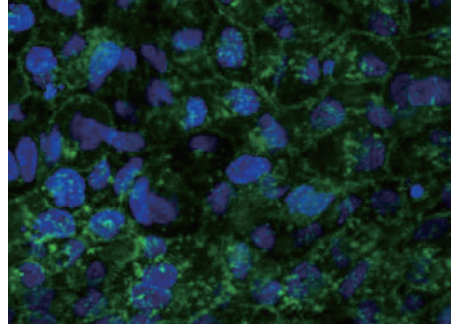
iPSC / ESC 분화능 확인하는 방법!

1. GloLIVE

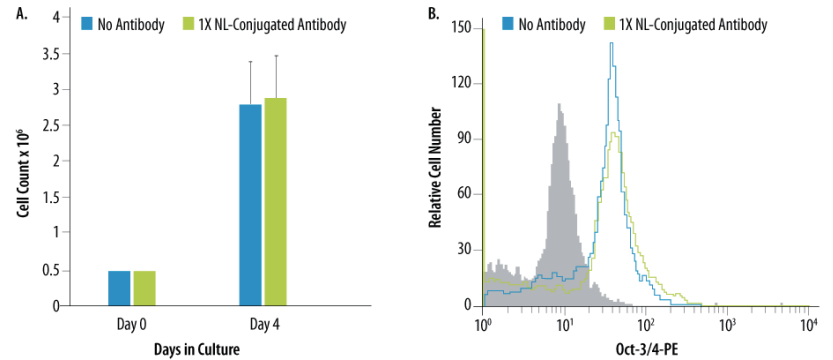
- 살아있는 Cell에서 30분만에 분화능 확인 가능!
- 분화능이 확인된 Cell을 바로 Picking 해서 Sub Culture 가능!



Human iPSC Culture 후
GloLive를 이용해서 iPS분화능 확인
TRA-1-60 / SSEA-4 / Hoechst 33342



살아있는 BG01V Cell Staining
SSEA-4 / Hoechst 33342

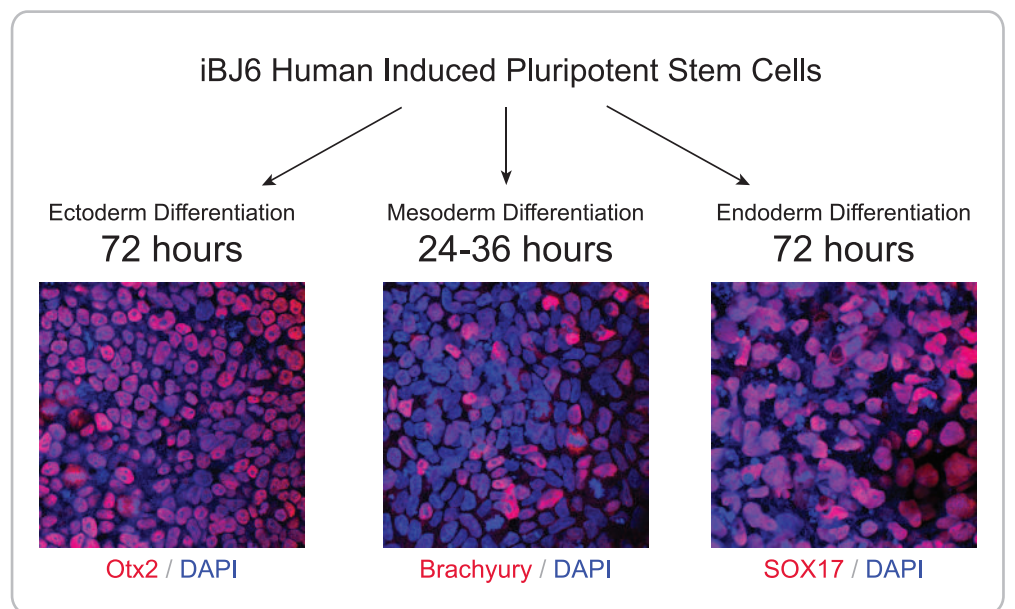
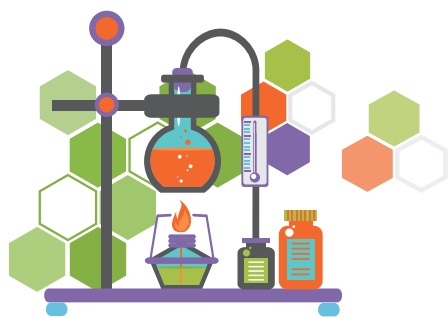


GloLive Antibody를 처리해도 Cell Proliferation에는 전혀 문제가 없습니다!

Marker	Human Stem Cells	Mouse Stem Cells	Conjugated to NL493 (green)	Conjugated to NL557 (red)
SSEA-1	Negative Marker	Positive Marker	NLLC2155G	NLLC2155R
SSEA-4	Positive Marker	Negative Marker	NLLC1435G	NLLC1435R
TRA-1-60(R)	Positive Marker	Not applicable	NLLC4770G	NLLC4770R
TRA-1-81	Positive Marker	Not applicable	NLLC16581G	NLLC16581R

2. Functional Identification Kit (cat#SC027)

- 분화에서 확인까지 단 5일!
- 번거로운 Teratoma 대신 간편한 ICC로 확인!



3. Human Pluripotent Stem Cell Array Kit (cat#ARY010)

- Cell Lysate 50µg으로 실험 가능
- 하나의 Sample에서 15개의 Protein 발현유무 확인
- Western Blot Set Up된 실험실이라면 별도의 장비 없이 바로 실험 가능

