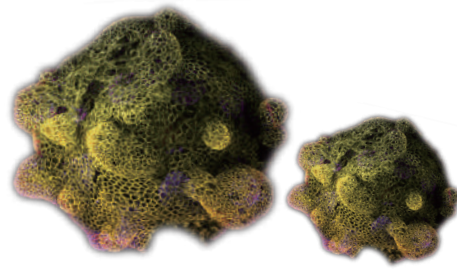


# Sales 50% Culture Matrix

R&D systems의 엄격한 QC  
Lot to Lot Variation 최소  
Low Price  
Similar Matrigel (성분동일)

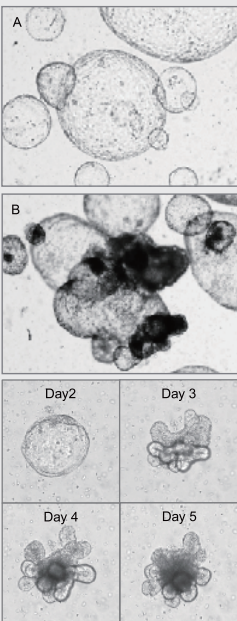


**R&D SYSTEMS**  
a biotechnne® brand

**1mL Size 50% 할인** 각 Application에 최적의 Matrix 구성 비율 제품들!

Applications	Products	Cat #	Size	행사가
일반	Cultrex BME	3432-001-01	1mL	24,000원
일반	Cultrex RGF BME	3433-001-01	1mL	24,000원
3D	Cultrex 3D Culture, RGF BME	3445-001-01	1mL	34,000원
Stem Cell	Cultrex Stem cell qualified, RGF BME	3434-001-02	1mL	29,000원
Organoids	Cultrex RGF BME, Type2	3533-001-02	1mL	24,000원
Organoids	Cultrex RGF BME, Type R1	3433-001-R1	1mL	24,000원
Xenografts/ Tumorgrafts	Cultrex BME, Type 3	3632-001-02	1mL	24,000원

\*특히 BME, Type R1은 성분 내 entactin 함유량이 많아 tissue 및 Organoids를 Culture하는데 적합.



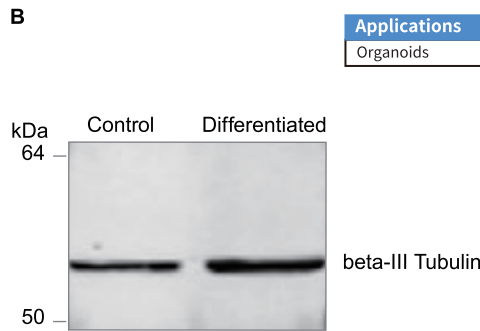
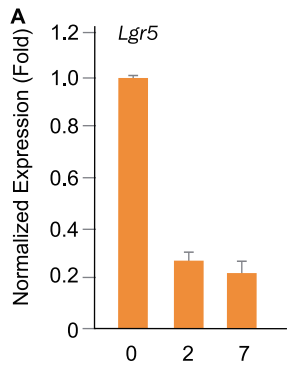
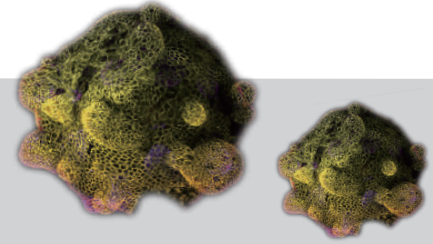
Applications	Products	Cat #	Size
Stem Cell	Cultrex Stem cell qualified, RGF BME	3434-001-02	1mL
Stem Cell	Cultrex Stem cell qualified, RGF BME	3434-005-02	5mL
Stem Cell	Cultrex Stem cell qualified, RGF BME	3434-010-02	2 x 5mL
Organoids	Cultrex RGF BME, Type2	3533-001-02	1mL
Organoids	Cultrex RGF BME, Type2	3533-005-02	5mL
Organoids	Cultrex RGF BME, Type2	3533-010-02	2 x 5mL
Organoids	Cultrex RGF BME, Type R1	3433-001-R1	1mL
Organoids	Cultrex RGF BME, Type R1	3433-005-R1	5mL
Organoids	Cultrex RGF BME, Type R1	3433-010-R1	2 x 5mL
Xenografts/ Tumorgrafts	Cultrex BME, Type 3	3632-001-02	1mL
Xenografts/ Tumorgrafts	Cultrex BME, Type 3	3632-005-02	5mL
Xenografts/ Tumorgrafts	Cultrex BME, Type 3	3632-010-02	2 x 5mL

# Organoid도 손쉽게 Harvest 하자!



## Cultrex® Organoid Harvesting Solution

- for Passing or Biochemical analysis
- non- Enzymatic method
- Ready - to - use



Applications	Products	Cat #	Size	행사가
Organoids	Organoids Harvesting Solution	3700-100-01	100 ML	41,000원

Mouse small intestine organoid pellets were harvested at days 0, 2, and 7 of differentiation using Cultrex Organoid Harvesting Solution (Catalog # 3700-100-01). (A) Harvested organoids were resuspended in TRIzol®, extracted for RNA, and analyzed for expression of Lgr5 using qPCR. As expected, a decrease in Lgr5 expression was detected between days 0 and 7 of differentiation. (B) Harvested organoids were resuspended in RIPA buffer for total lysate preparation. Lysates from control and differentiated organoids were analyzed by Western blot for beta-III Tubulin expression.

Cultrex® Organoid Harvesting Solution is Compatible with Biochemical Analysis

## Related Extracellular Matrix Proteins & Reagents

Name	Size	Catalog #
Cultrex Mouse Laminin I, PathClear®	1 mg	3400-010-02
Cultrex Mouse Collagen IV	1 mg	3410-010-01
Cultrex Human Fibronectin, PathClear®	1 mg	3420-001-01
Cultrex Human Vitronectin, PathClear®	50 µg	3421-001-01
Cultrex Rat Collagen I (5 mg/ml)	1 ml	3440-005-01
Cultrex Rat Collagen I (5 mg/ml)	20 ml	3440-100-01

Name	Size	Catalog #
Cultrex Bovine Collagen I (5 mg/ml)	1 ml	3442-005-01
Cultrex Bovine Collagen I (5 mg/ml)	10 ml	3442-050-01
Cultrex Rat Collagen I, Lower Viscosity (3 mg/ml)	35 ml	3443-100-01
Cultrex Rat Collagen I, Lower Viscosity (3 mg/ml)	1 ml	3443-003-01
Cultrex 3-D Culture Extract Laminin I	30 mg	3446-005-01
Cultrex 3-D Culture Extract Rat Collagen I	20 ml	3447-020-01

Name	Size	Catalog #
Cultrex Poly-L-Ornithine	100 ml	3436-100-01
Cultrex Poly-D-Lysine	100 ml	3439-100-01
Cultrex Poly-L-Lysine	100 ml	3438-100-01

서울특별시 송파구 송파대로 201  
테라타워2 A동 1113호  
(문정동 642번지)



■ Tel : 02-881-5432  
■ Fax : 02-881-5454  
■ Mail : techserv@woongbee.com