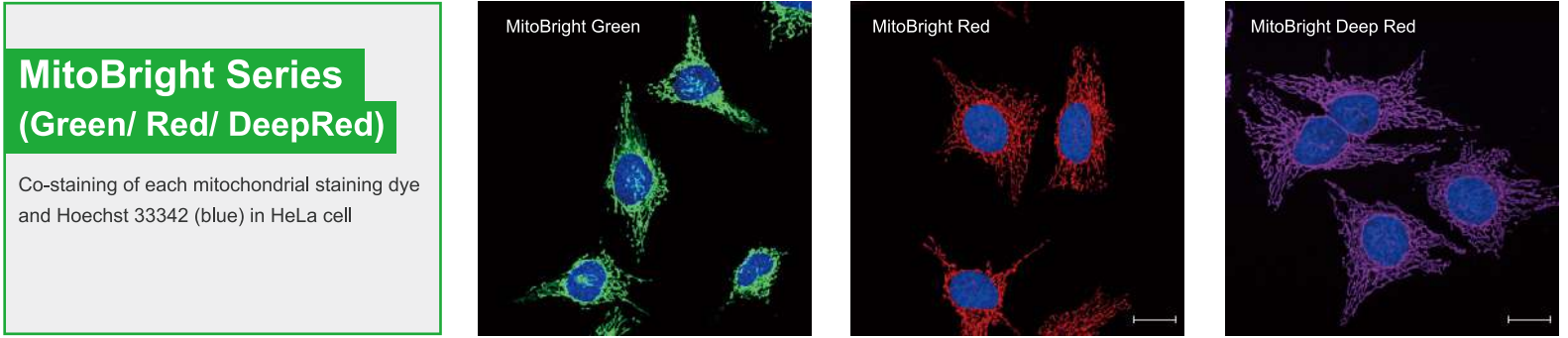


MitoBright LT – Green / Red / Deep Red

- High Intracellular Retention
- Long-Term Visualization of Mitochondria
- Provided as Ready-to-Use DMSO Solution
- Allows for Collagen-coated Plates
- Applicable for Fluorescence Microscopy and Flow Cytometry

Mitochondrial Staining Reagent

MitoBright is well retained in mitochondria because of its covalent bond ability to proteins.



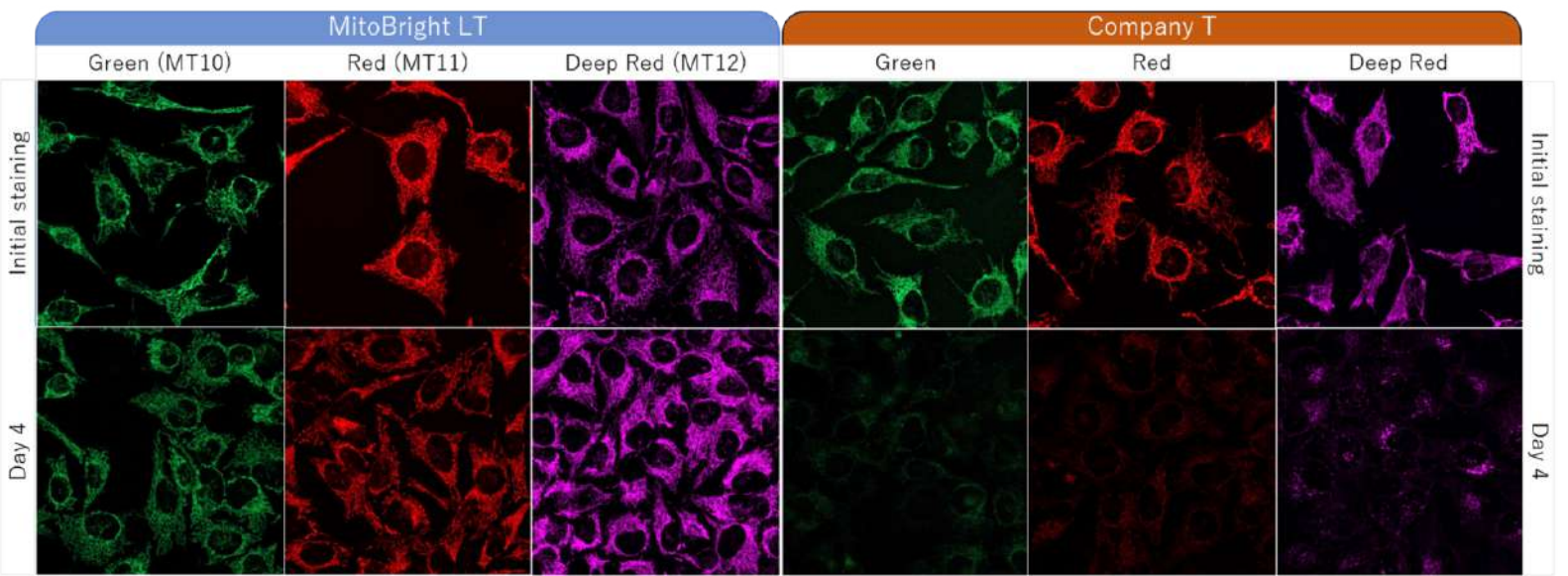
MitoBright series line-up

Description	λ_{ex}	λ_{em}	live imaging	staining before fixation*	staining after fixation
MitoBright Green	493 nm	508 nm	○	○	×
MitoBright Red	547 nm	563 nm	○	○	×
MitoBright Deep Red	643 nm	663 nm	○	○	×

※ PFA (paraformaldehyde) fixation

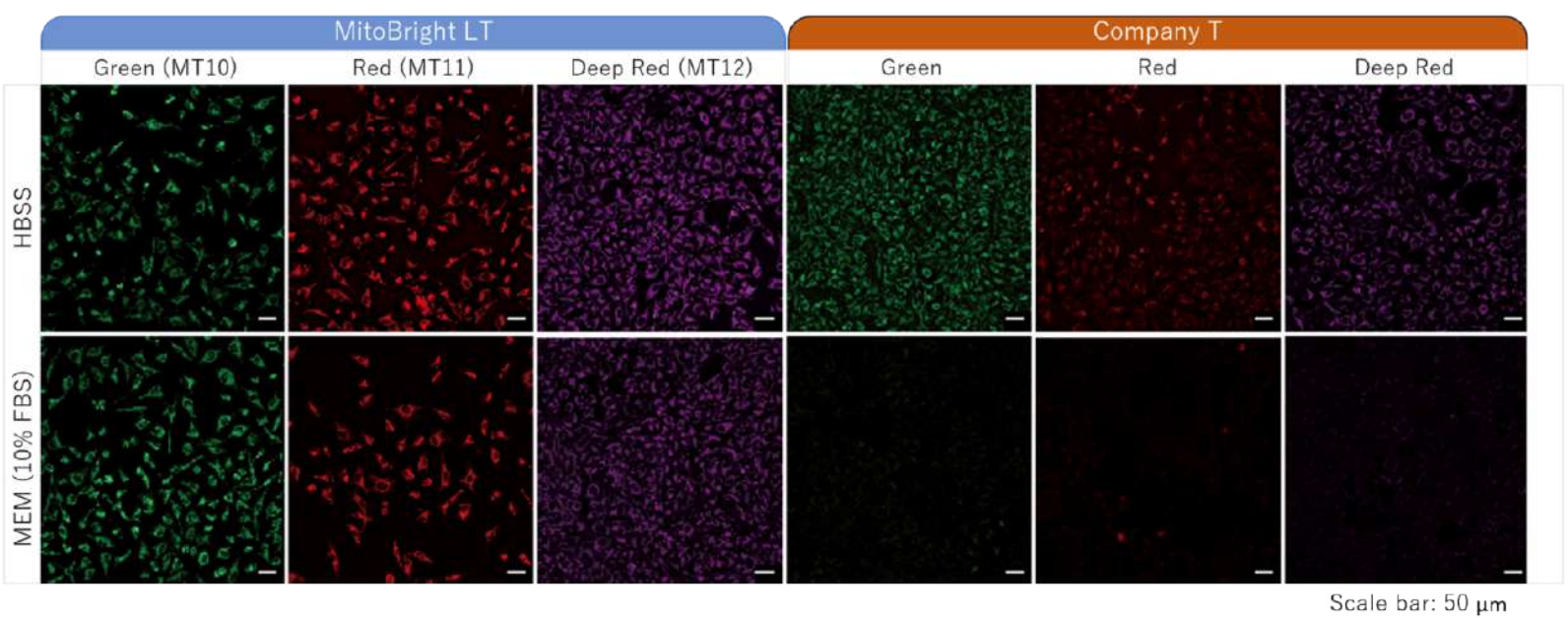
High Intracellular Retentivity

HeLa cells were washed with HBSS (Hank's Balanced Salt Solution) and subsequently stained with each of MitoBright LTs or an existing reagent. The culture medium was replaced with serum-containing medium, and mitochondria were observed after 4 days of incubation. As a result, fluorescence intensity of an existing reagent decreased significantly after 4 days, but in MitoBright LT, fluorescence intensity remained unchanged and mitochondria were clearly observable. Moreover, after further incubation, we confirmed that MitoBright LT was retained in mitochondria even after 7 days.



Stained in serum-contained media

Staining was performed with either MitoBright LT or an existing reagent in serum-containing or serum-free medium. In serum-containing medium, low fluorescence intensity was observed when using the existing reagent, however the cells stained with MitoBright LT experienced clear, resilient fluorescence of mitochondria

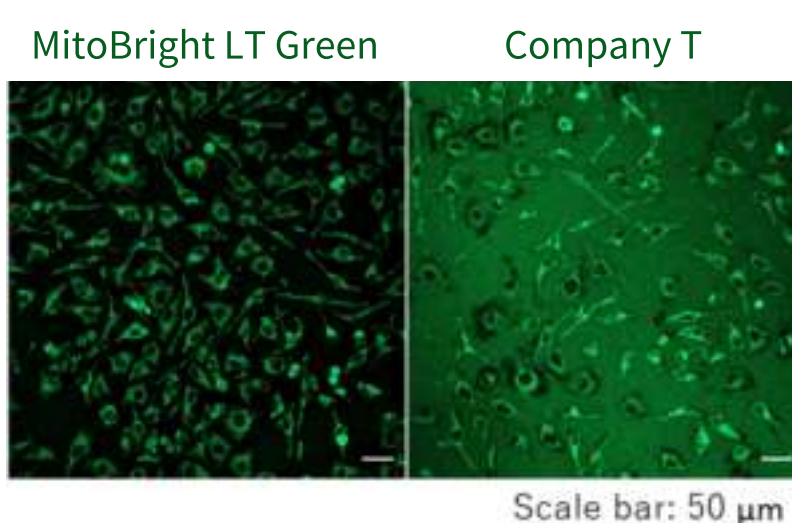


Scale bar: 50 μ m

Detection of mitochondria using a collagen coated tissue plate

Collagen-coated tissue culture plates are often used for examination of mitochondrial morphology because this imaging requires high magnifications.

The existing mitochondrial staining reagent bound to collagen, resulting with an increase in background staining, whereas the MitoBright LT series yielded clearly stained mitochondria.



Scale bar: 50 μ m

[Mitochondria 제품 더보기 >>](#)