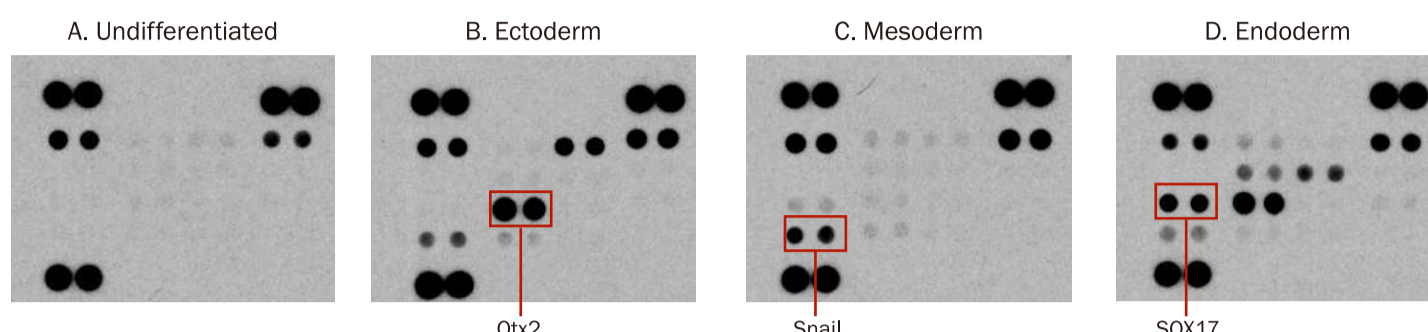


## Proteome Profiler™ Human Pluripotent Stem Cell Array Kit

- **Rapid:** analyze the expression level of dozens of proteins simultaneously
- **Economical:** contains 4 membranes—each protein is spotted in duplicate
- **Convenient:** small sample size requirements

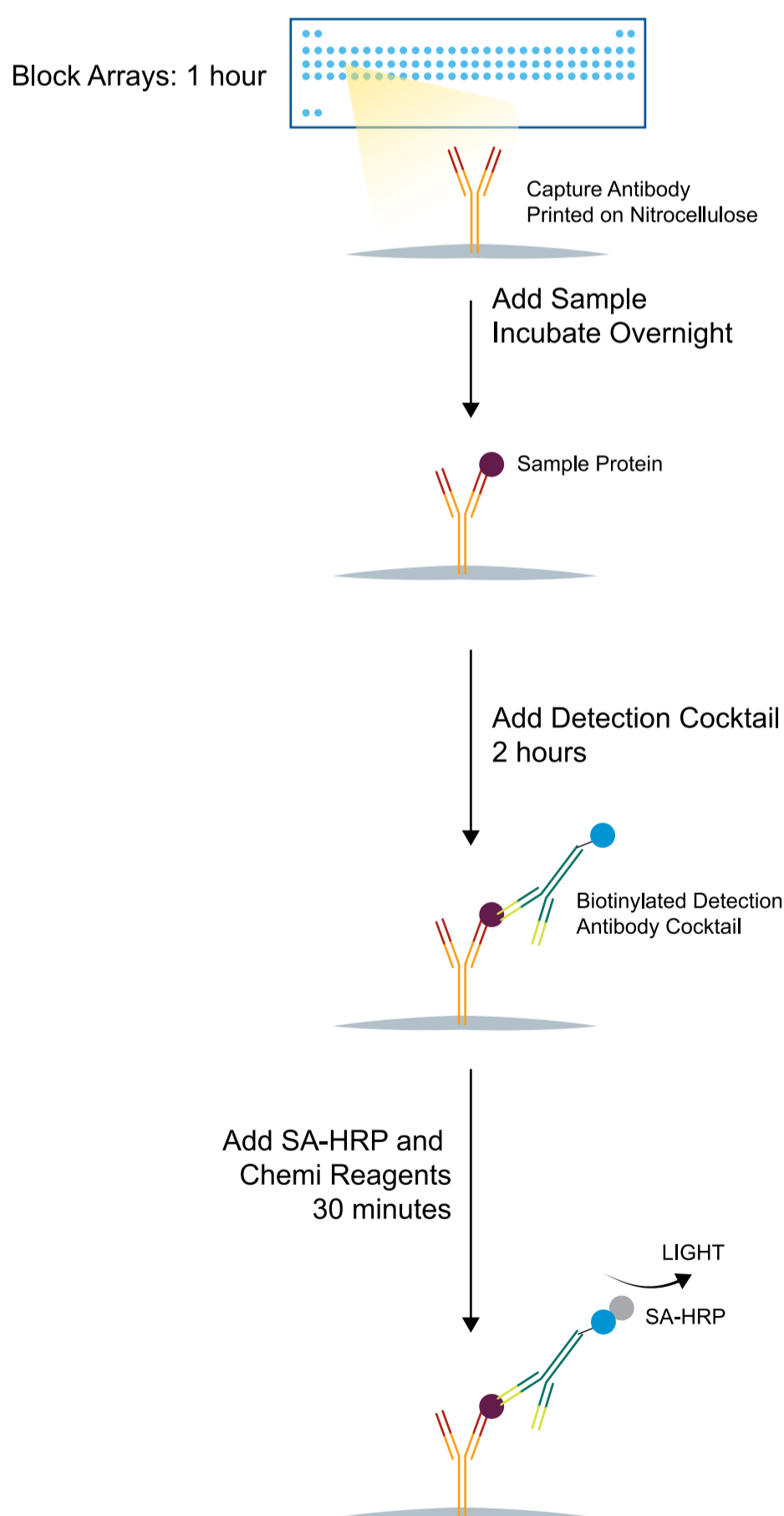


Proteome Profiler Uses Small Lysate Volume to Analyze Markers of Human Pluripotent Stem Cell Differentiation. BG01V human embryonic stem cells were differentiated into ectoderm, mesoderm, and endoderm using the differentiation supplements included in the Human Pluripotent Stem Cell Functional Identification Kit (Catalog # SC027). Following differentiation in a 24-well plate, a single well of confluent cells was lysed in 100 µL of lysis

buffer and analyzed using the Proteome Profiler Human Pluripotent Stem Cell Array Kit (Catalog # ARY010). The differentiation supplements upregulated expression of markers for ectoderm (B; Otx2), mesoderm (C; Snail), and endoderm (D; SOX17) compared to undifferentiated cells (A).

Human Pluripotent Stem Cell Array Kit	
<b>Catalog#ARY010</b>	<b>8 Tests</b>
Contains 8 membranes - each spotted in duplicate with 15 different stem cell marker antibodies	
E-Cadherin, α-Fetoprotein, GATA-4*, Goosecoid, HCG, HNF-3/FoxA2*, Nanog, Oct-3/4, Otx2, PDX-1/PF1*, Snail, SOX2*, SOX17, TP63/TP73L, VEGF R2/KDR *Crossreacts with mouse	
Validated Sample Type	Suggested Sample Size
Cell Lysates	50-300 µg

## Multiple Analyte Results in only 5.5 Hours



\* R&D systems의 Proteome Profiler Antibody array kit의 모든 제품 정보는 아래 링크를 클릭하시면 자세하게 확인하실 수 있습니다.

[Proteome Profiler Antibody array kit 제품 정보 확인하기 >>](#)